

EverGreen

A state of the art laser for PIV



- 2-year warranty including beam overlap

- Low energy alignment mode button

- 100 million shots lamp lifetime warranted

- Grab and go handles

- System parameters stored in laser head

- Built to withstand harsh environments

- Temperature cycled & vibration tested

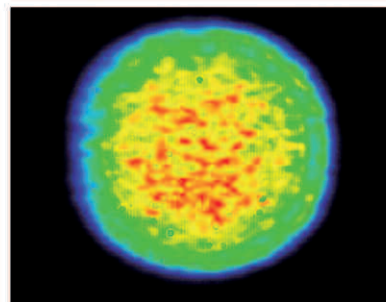
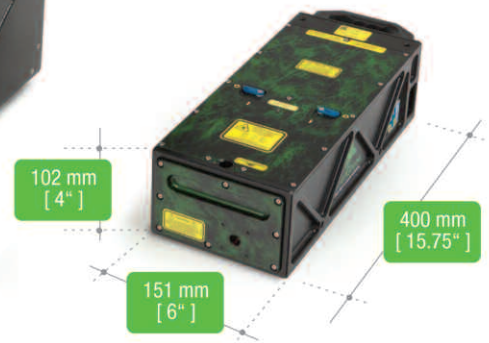
- Quick connect umbilicals

Integrated Cooling and Electronic (ICE)

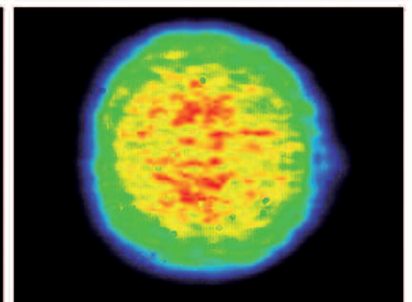
18 kg [40 lbs]

Optical laser head

7 kg [15.5 lbs]



Near field image - Pulse 1



Near field image - Pulse 2

Tough, Rugged, Reliable. Simply easy to use.

MODEL	EverGreen 70	EverGreen 145	EverGreen 200
Wavelength (nm)	532		
Pulse repetition rate (Hz)	0-15		
Energy (mJ)*	70	145	200
Pulse-to-pulse energy stability (% RMS)	< 2		
Energy drift over 8 hours (%)	10		
Pulse width (ns)**	≤ 10		
Near field beam diameter (mm)	< 5.0	< 6.35	< 6.35
Beam divergence (mrad)***	< 4		
Shot to shot pointing stability (μrad)	< 100		
Far field beam overlap (μrad)	± 100		
Near field beam overlap (μm)	± 100		
Polarization	linearly polarized, vertical		
Spectral purity (%)	> 98		
Near field beam profile	flat-top, uniform		

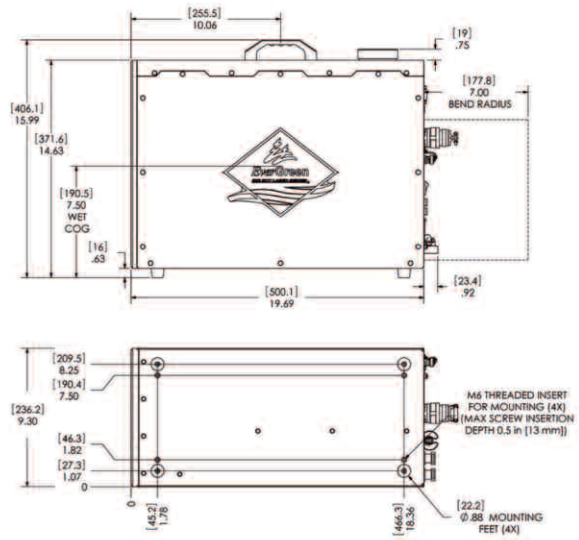
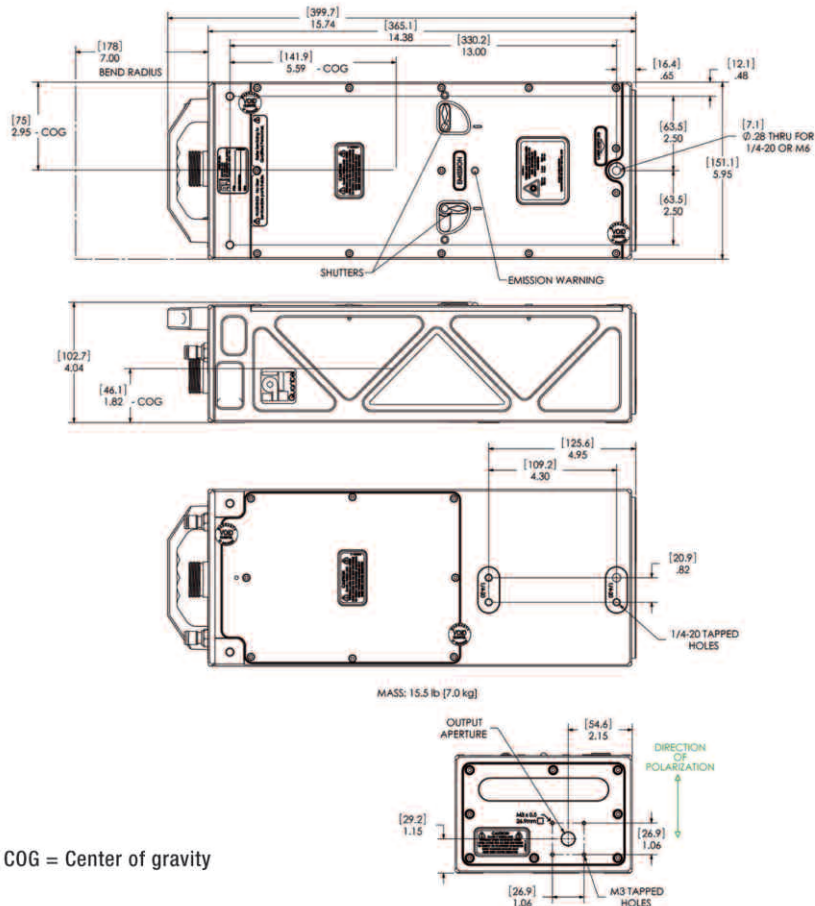
Operational temperature range	18°C - 28°C
Storage temperature range	5°C - 50°C
Power requirements	100-240 VAC 50-60 Hz universal input
Flashlamps lifetime	100 million shots
Coolant	distilled / deionized water
Triggers	5 V nominal into 50 Ω or 5 V nominal into high-impedance, user selectable
Laser head operation	laser head assembly can operate in any orientation
Laser head sealing	sealed to IP 67 specification
Power supply sealing	sealed to IP 21 specification
Laser vibration compliance	MIL-STD-810F Procedure 1 Category 10
Cable length	3 meters (9.84 feet)

All specifications are at 15 Hz

* Double pulsed system : energy given for each pulse

** FWHM at nominal energy

*** Full angle containing 86.5% energy



For more detailed technical drawings, please visit www.quantel-laser.com



Quantel - France
2 bis, avenue du Pacifique
Z.A. de Courtaboeuf - BP 23
91941 Les Ulis Cedex - France
Tel. +33 (0)1 69 29 17 00

Quantel - USA
601 Haggerty Lane
Bozeman, MT 59715 - 2001 - USA
Tel. +1 406 586 0131 / 1 877 QUANTEL

Quantel - Germany
Am Wolfsmantel 46
91058 Erlangen - Germany
Tel. +49 (0) 9131 94088-15

E-mail : quantel@quantel.fr

www.quantel-laser.com

